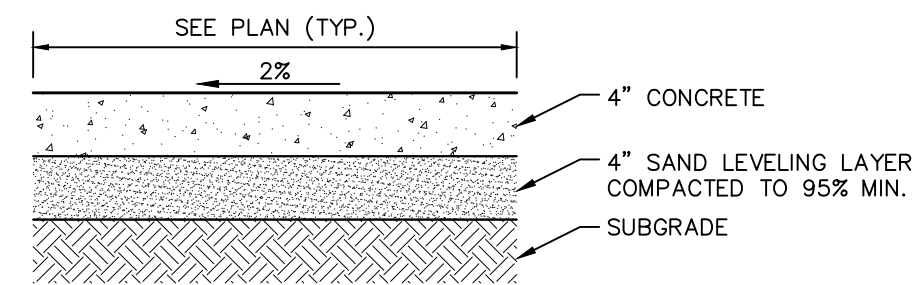
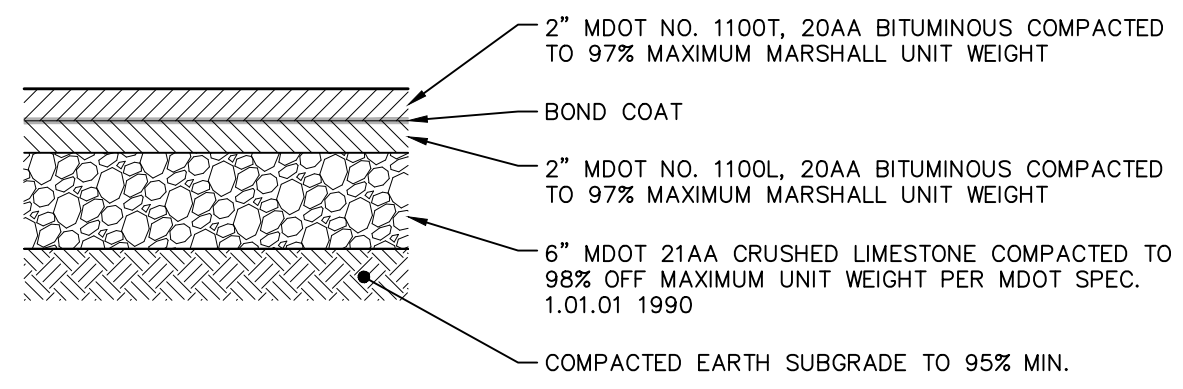


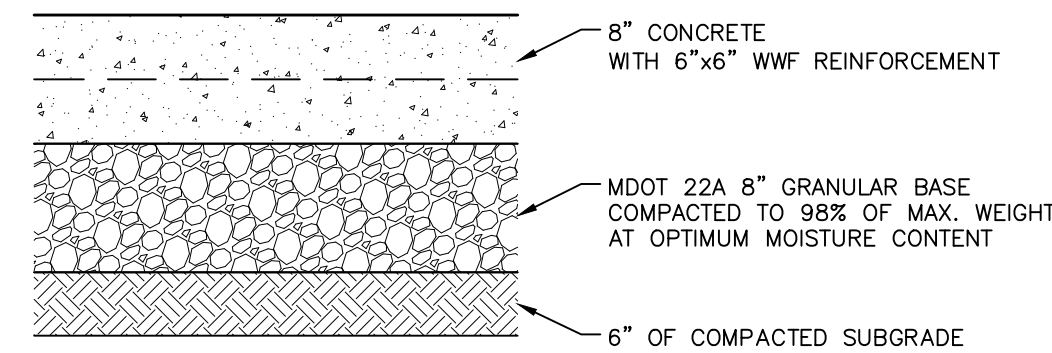
SIDEWALK BITUMINOUS PAVEMENT
NOT TO SCALE



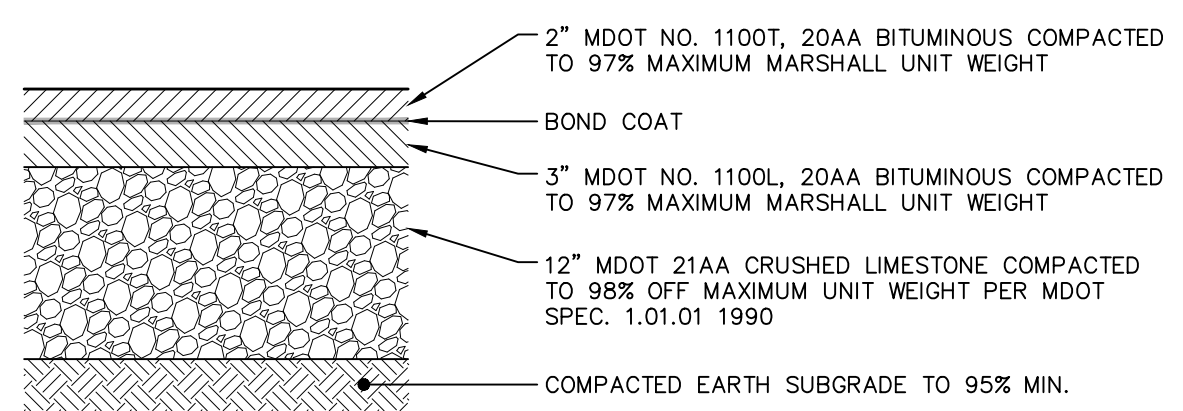
CONCRETE SIDEWALK - STANDARD
NOT TO SCALE



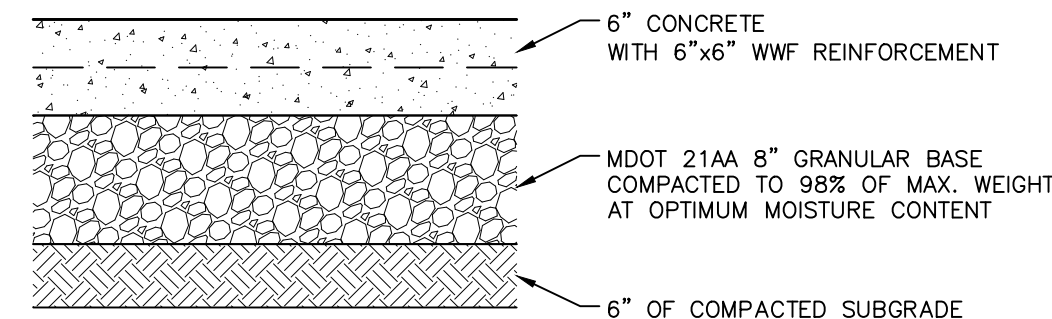
STANDARD PARKING LOT BITUMINOUS PAVEMENT
NOT TO SCALE



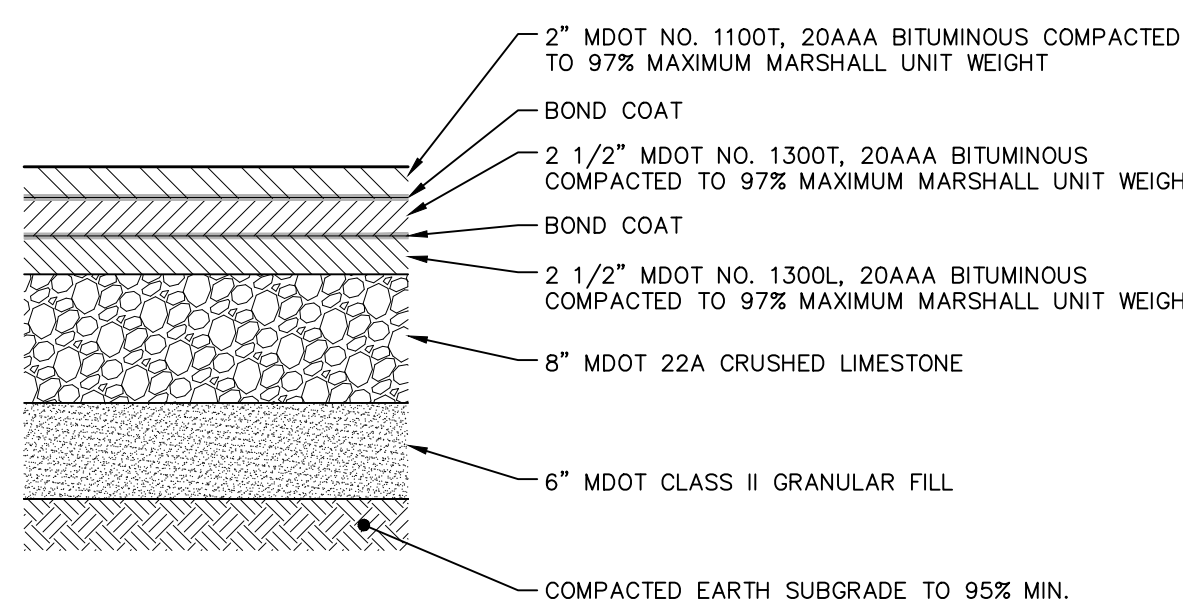
CONCRETE SIDEWALK - HEAVY DUTY
NOT TO SCALE



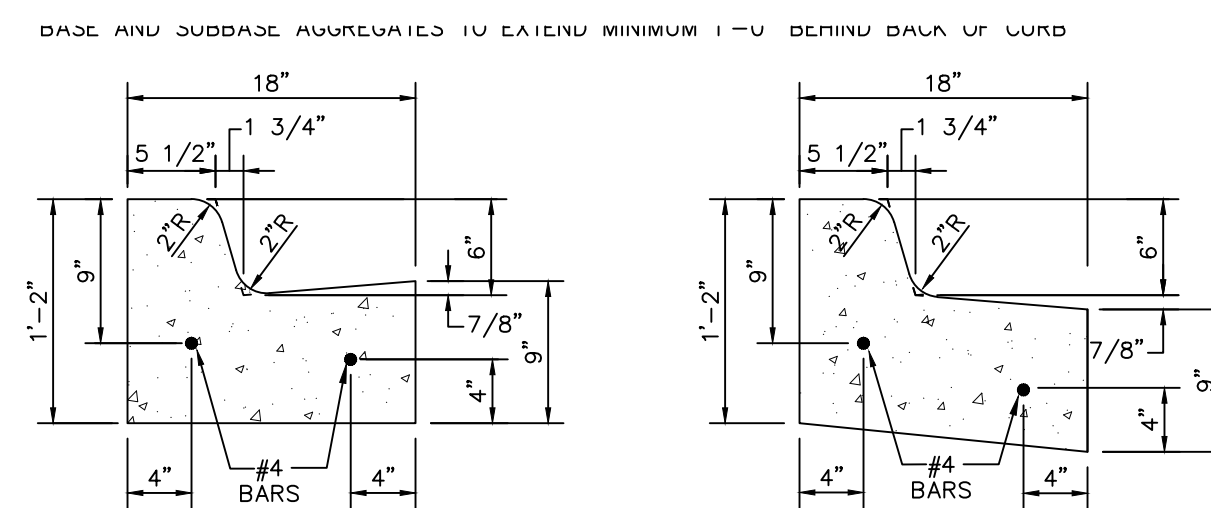
HEAVY DUTY PARKING LOT BITUMINOUS PAVEMENT
NOT TO SCALE



CONCRETE SIDEWALK THROUGH DRIVEWAY
NOT TO SCALE

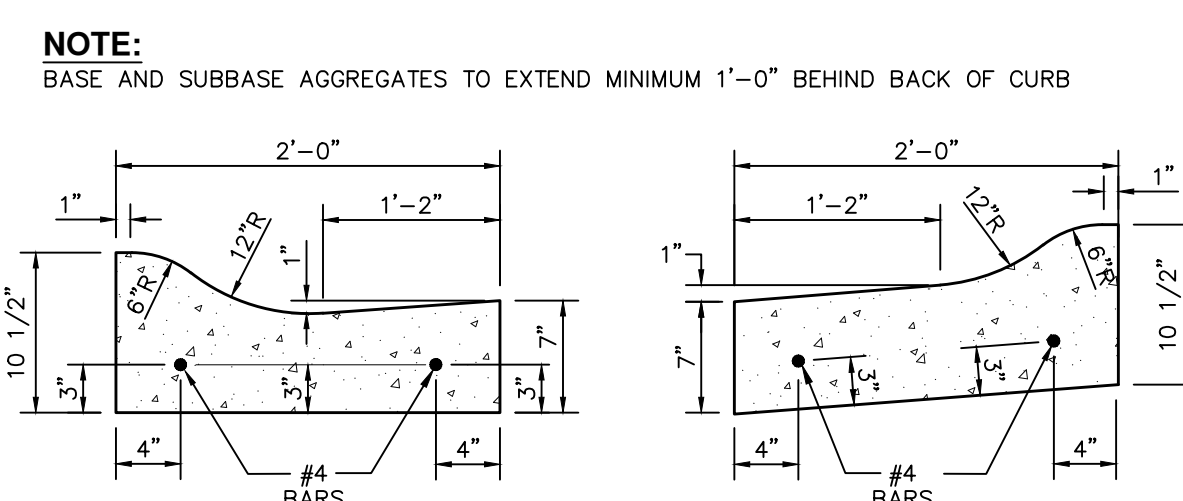


BITUMINOUS ROAD PAVEMENT SECTION
NOT TO SCALE



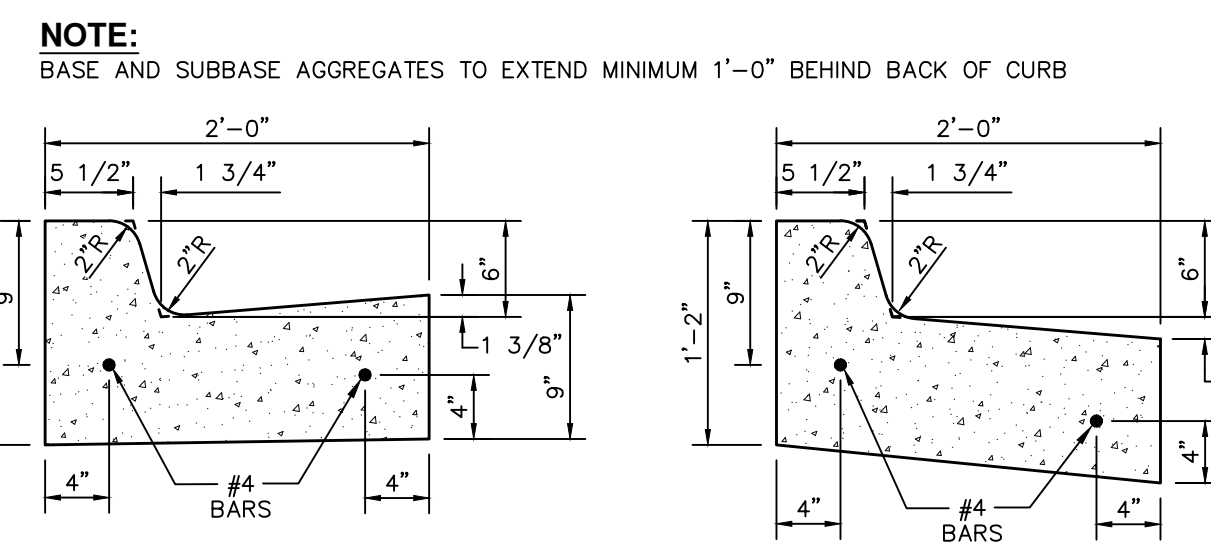
PITCH IN CURB **PITCH OUT CURB**

CONCRETE CURB (F2)
NOT TO SCALE



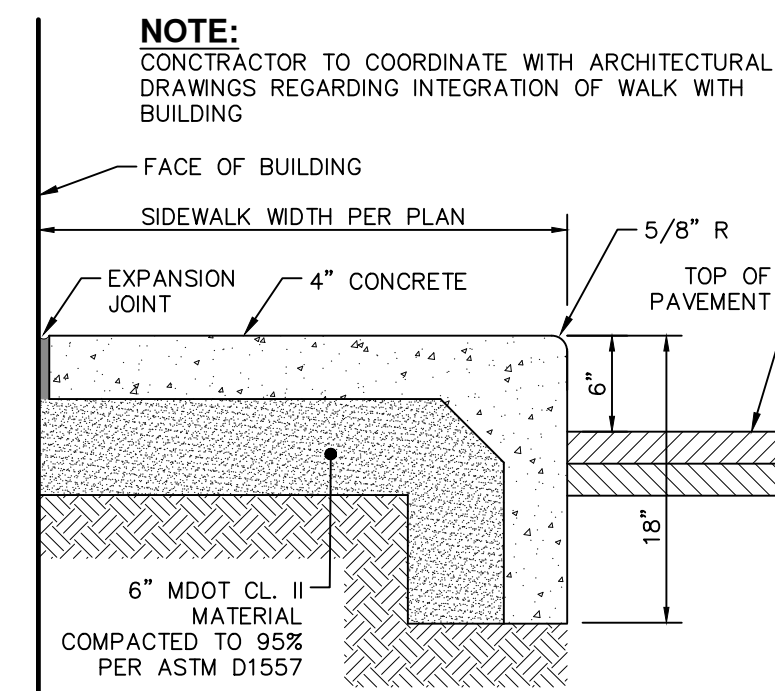
PITCH IN CURB **PITCH OUT CURB**

ROLL CONCRETE CURB & GUTTER
NOT TO SCALE

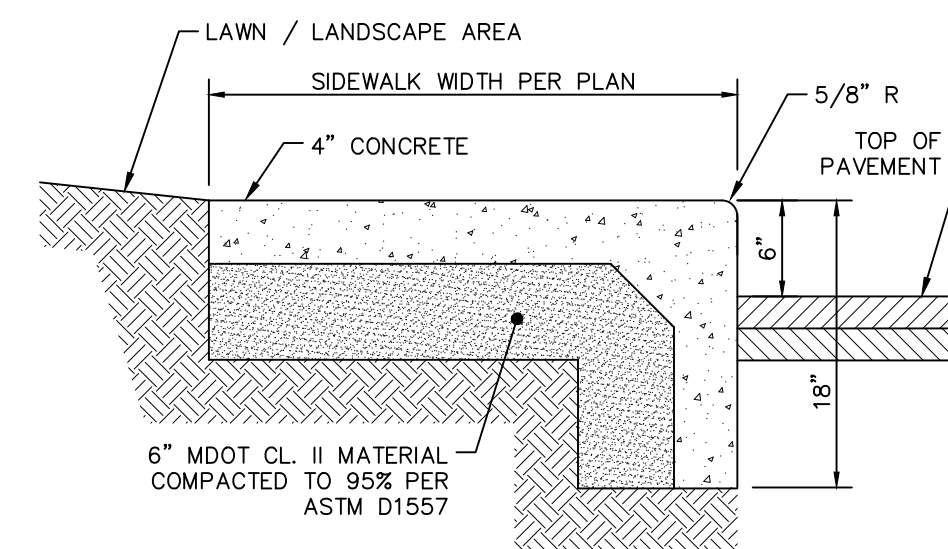


PITCH IN CURB **PITCH OUT CURB**

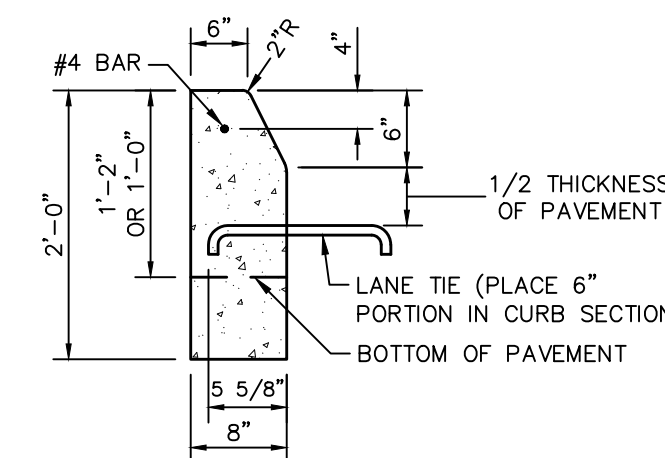
CONCRETE CURB (F4)
NOT TO SCALE



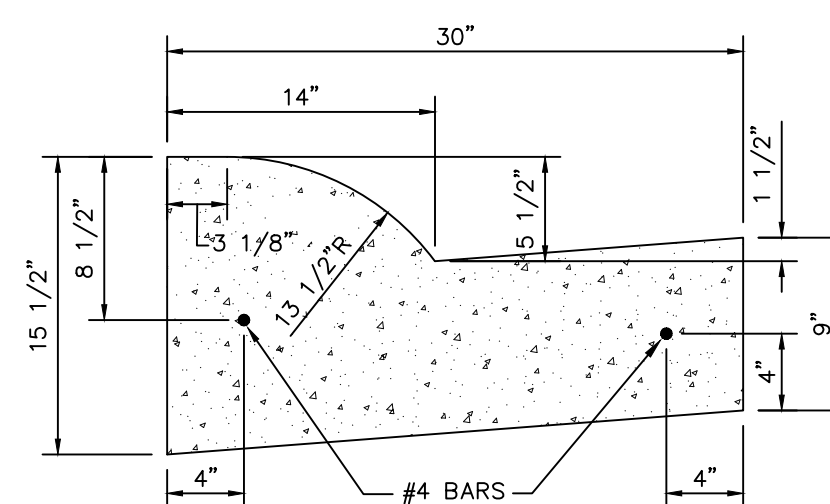
INTEGRAL CONCRETE CURB AND WALK AT BUILDING
NOT TO SCALE



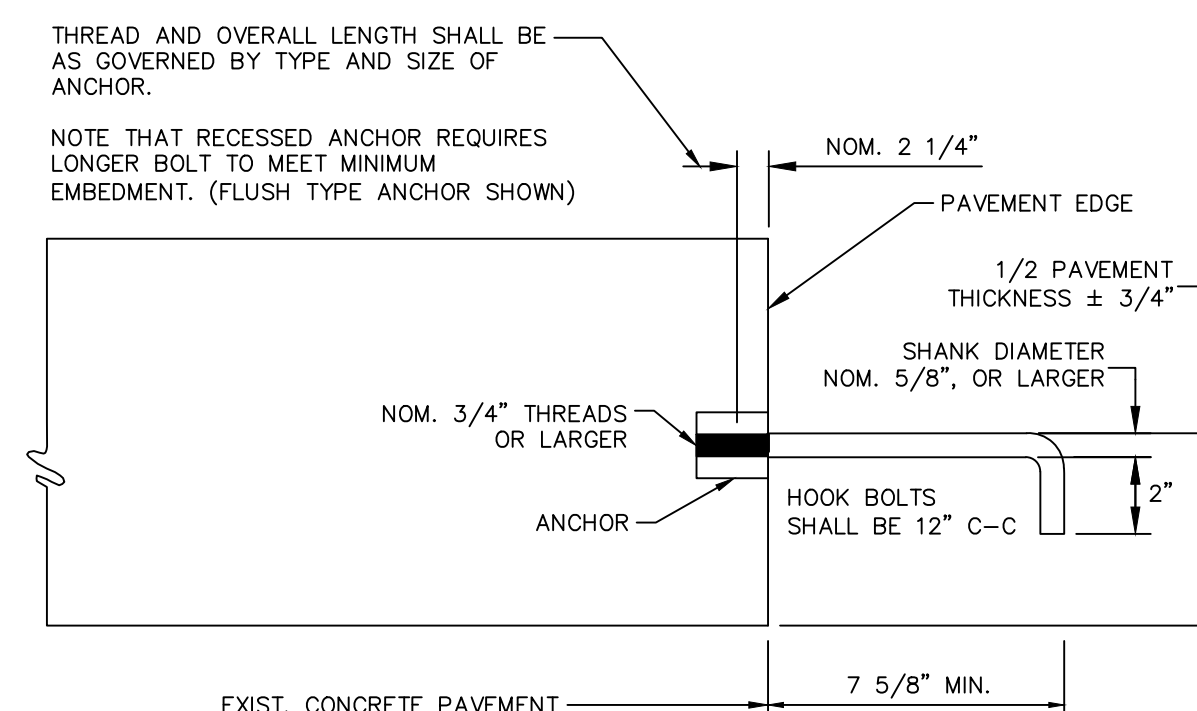
INTEGRAL CONCRETE CURB AND WALK
NOT TO SCALE



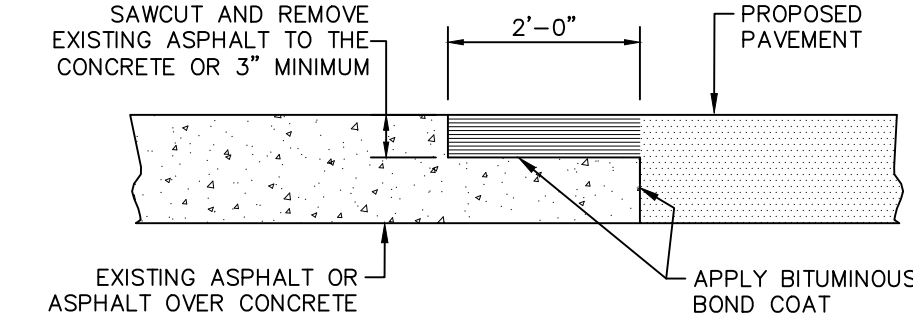
STRAIGHT CONCRETE CURB
NOT TO SCALE



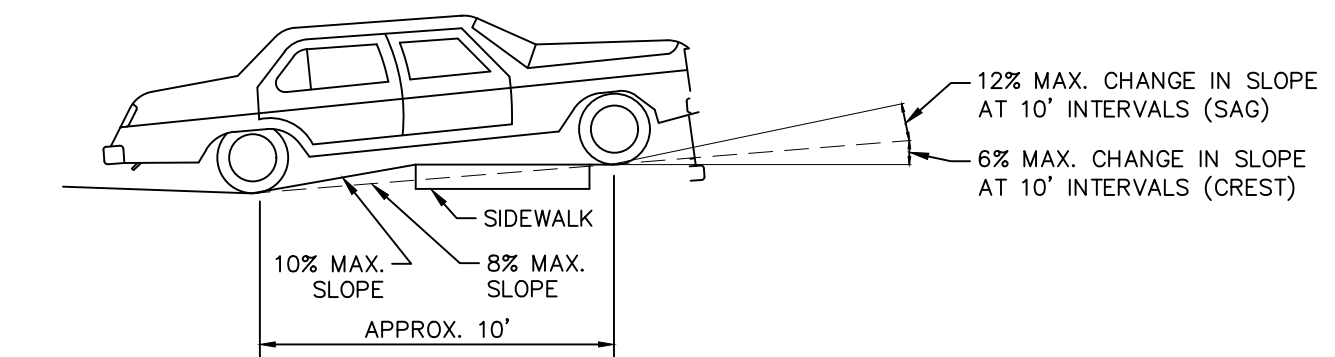
MOUNTABLE CONCRETE CURB & GUTTER (B2)
NOT TO SCALE



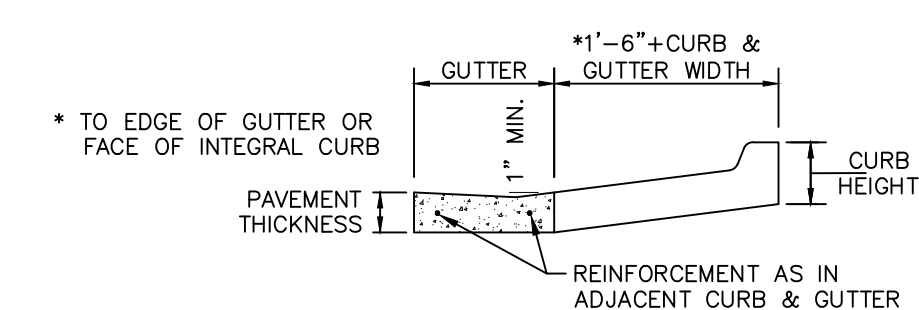
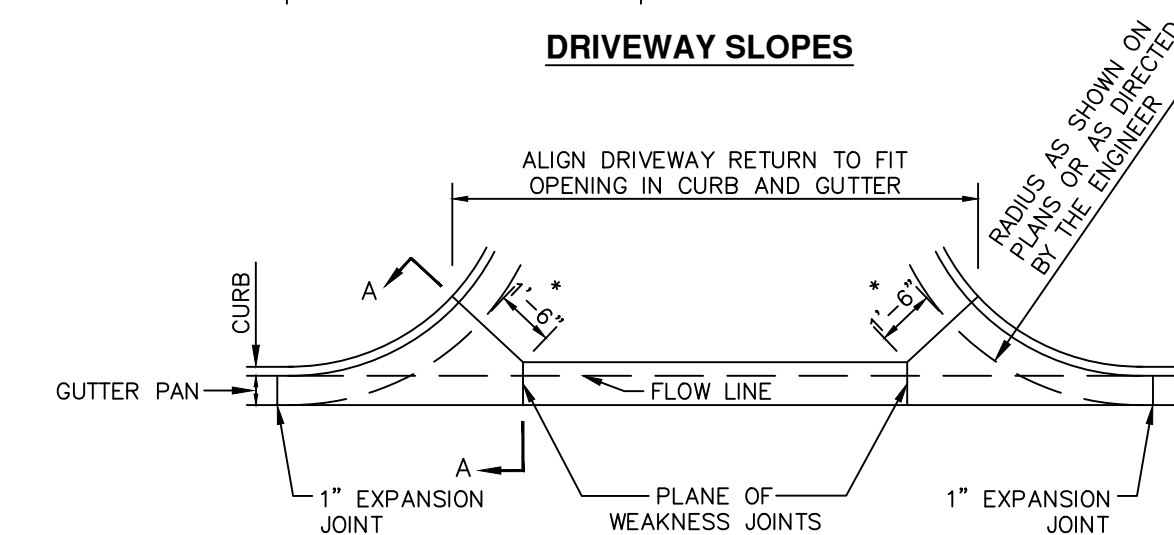
MECHANICAL ANCHOR AND HOOK BOLT SD-R-5
NOT TO SCALE



BUTT JOINT
NOT TO SCALE

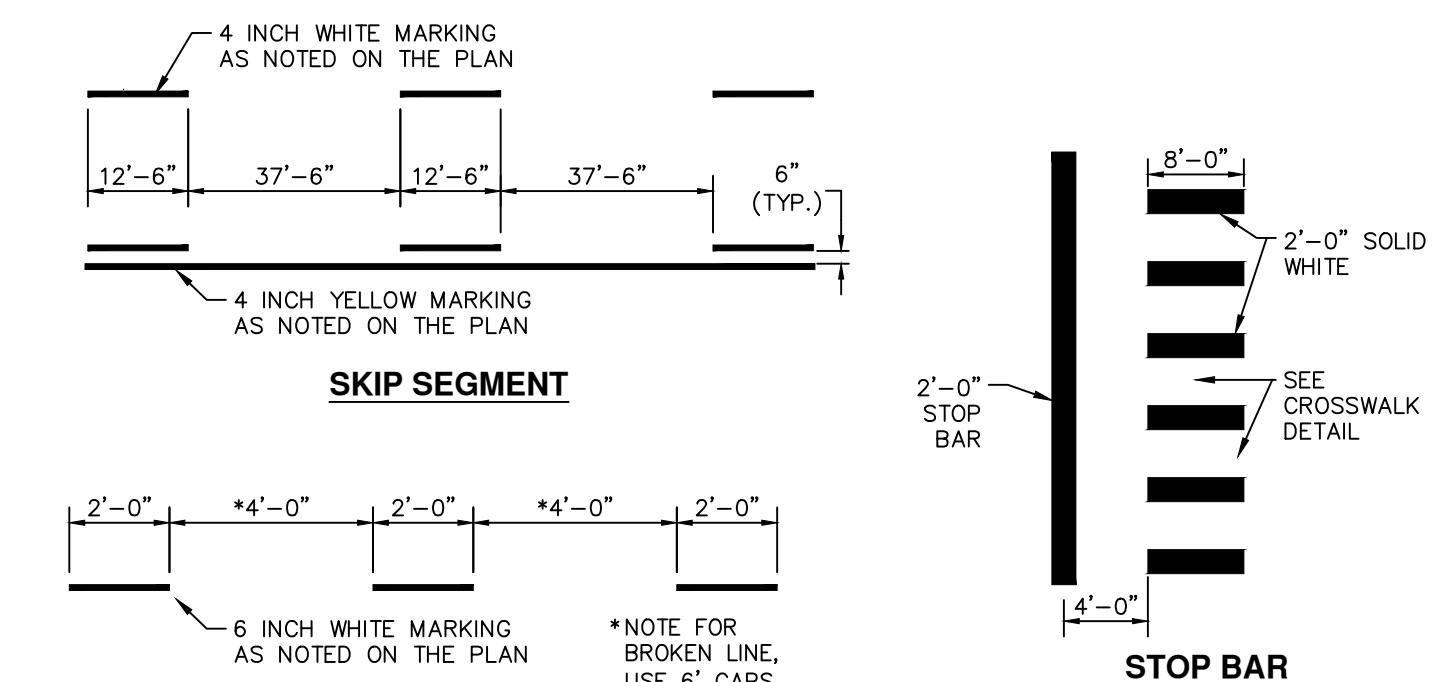


DRIVEWAY SLOPES



SECTION A-A

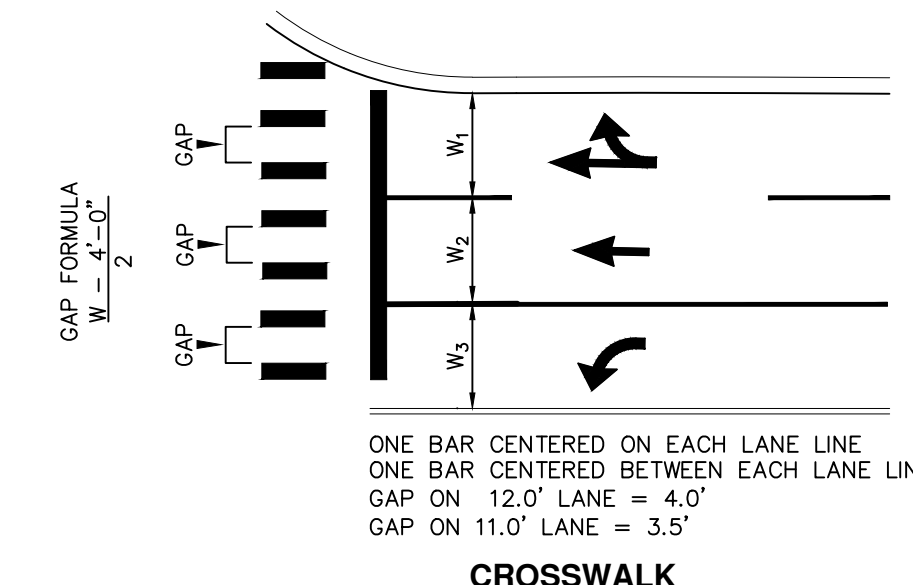
DRIVEWAY OPENING AND APPROACH
MDOT DETAIL 11-29E - DETAIL M
NOT TO SCALE



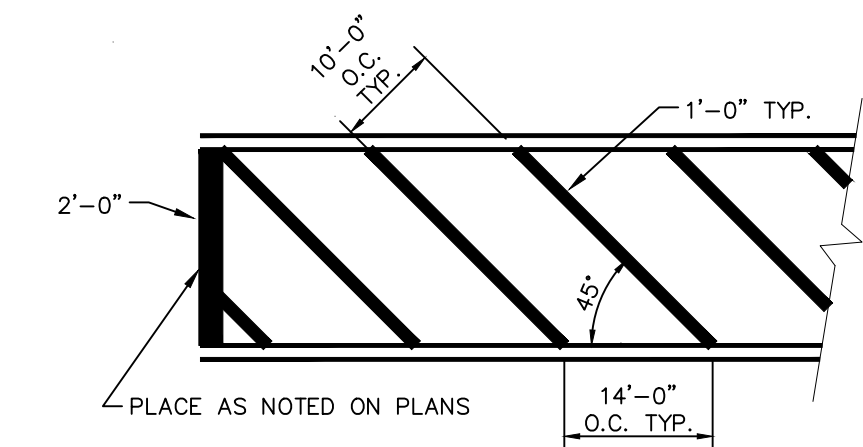
SKIP SEGMENT

DOTTED LINE

STOP BAR



CROSSWALK



PAVEMENT MARKINGS
NOT TO SCALE

ISSUED FOR:	
REV:	
DATE:	

CITY OF HIGHLAND PARK
STANDARD PAVEMENT DETAILS AND NOTES
PAVEMENT-1



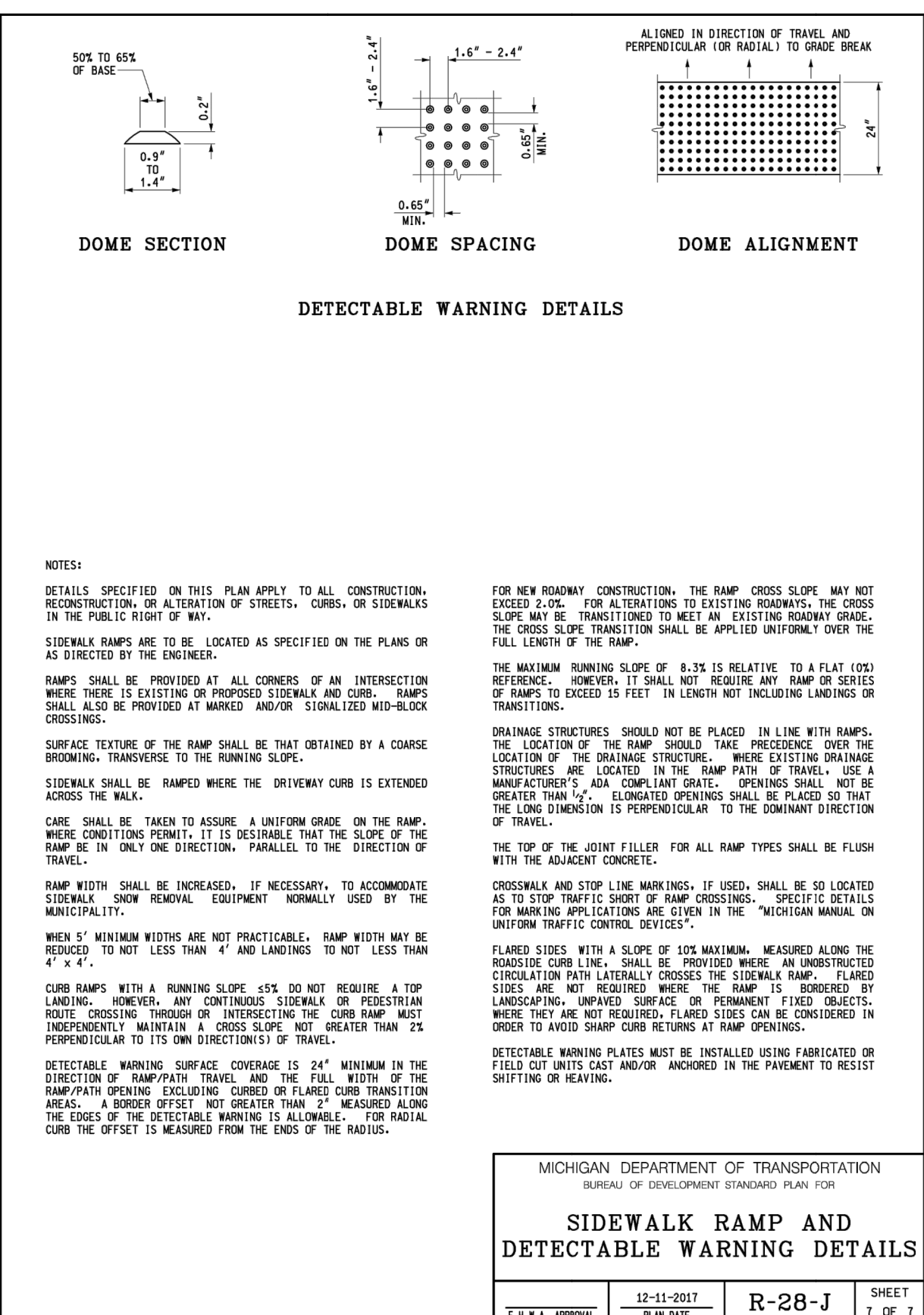
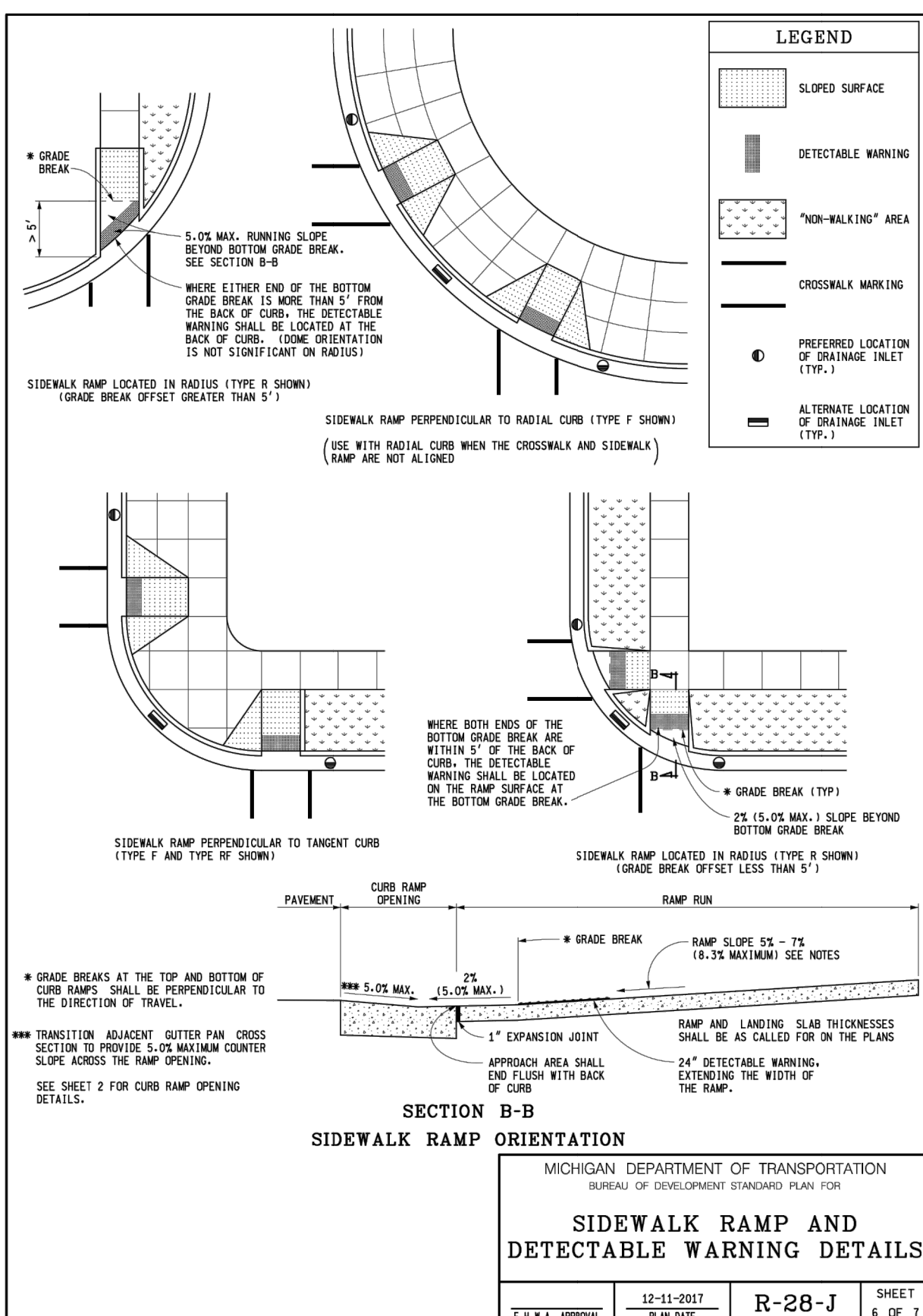
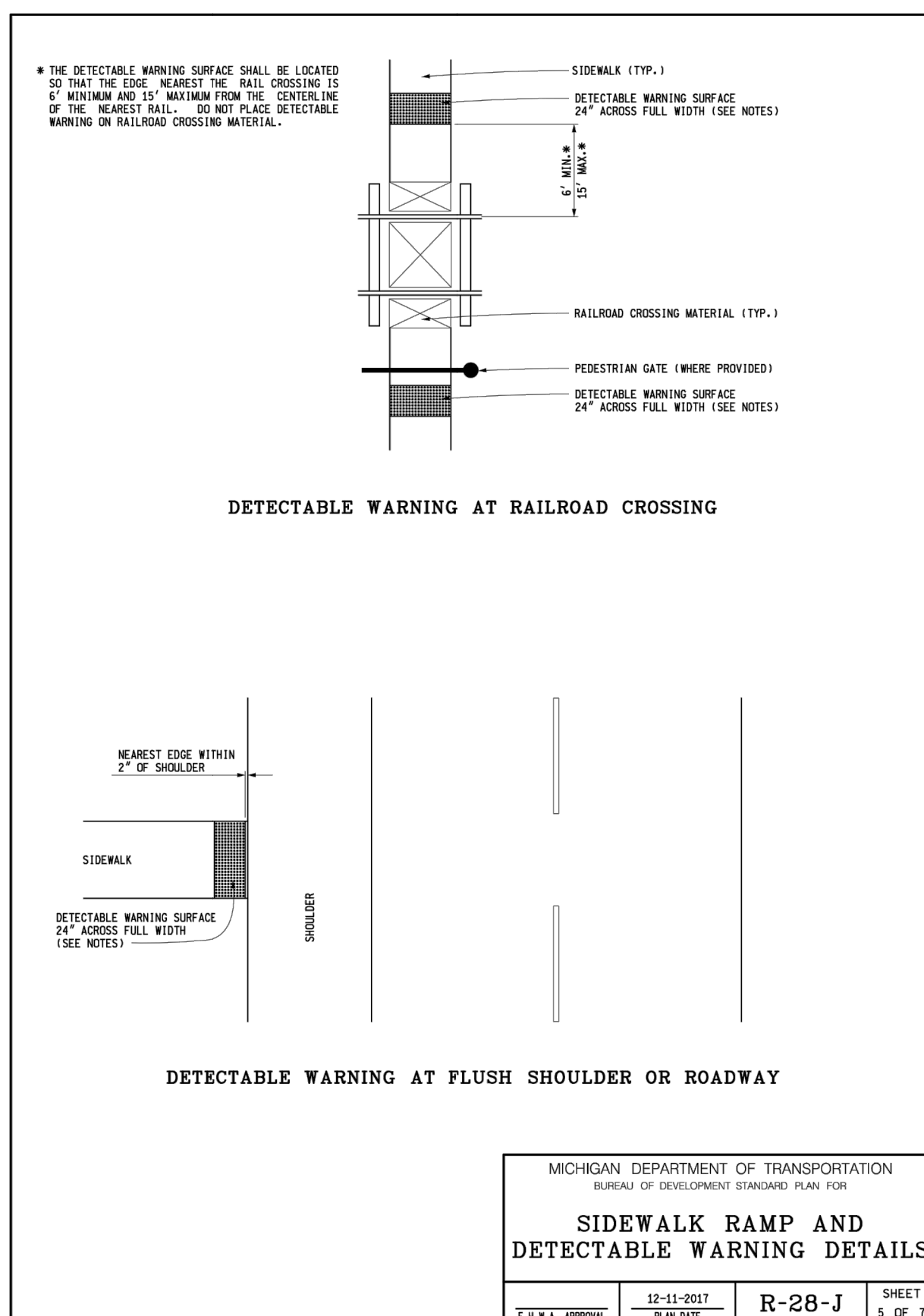
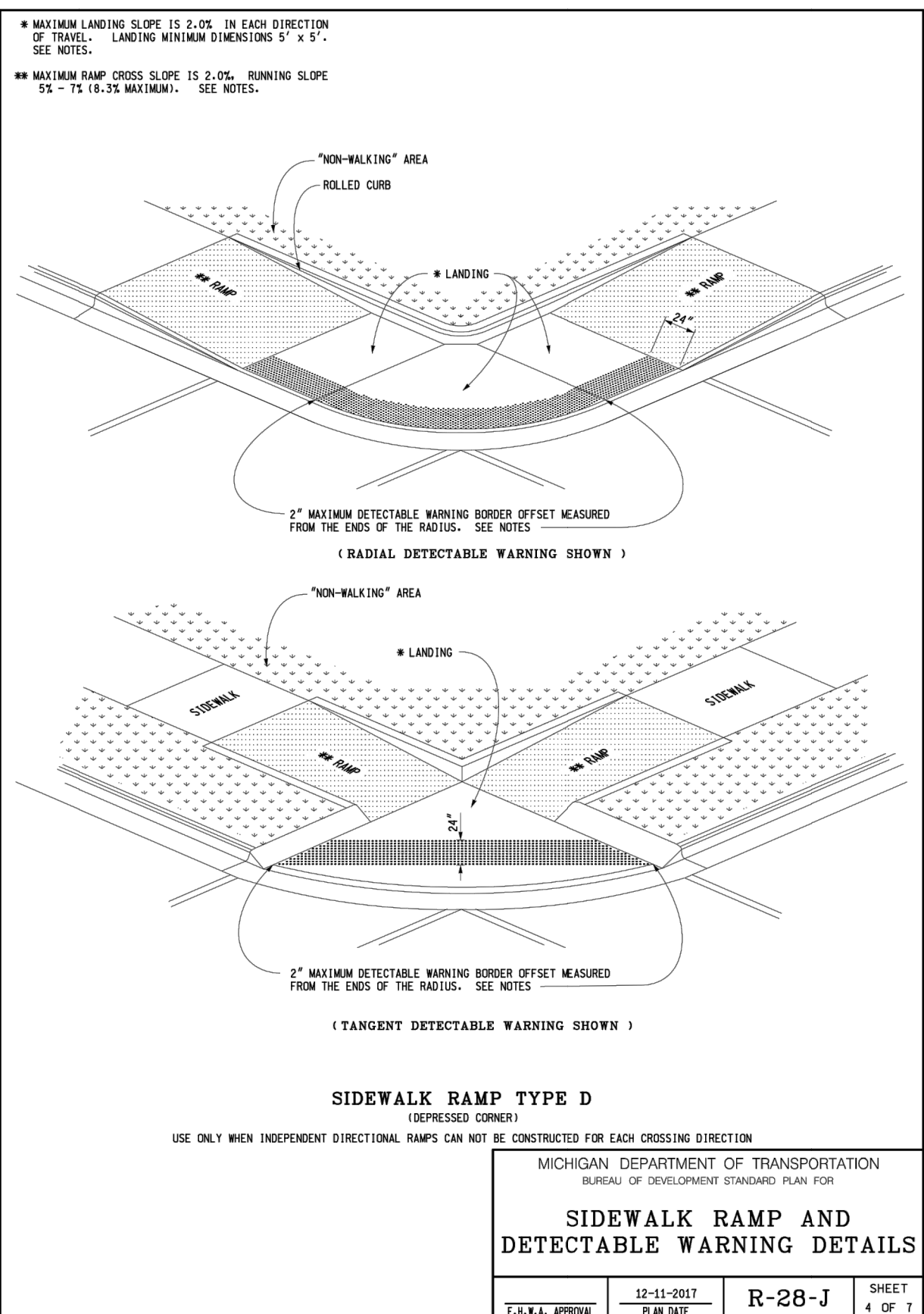
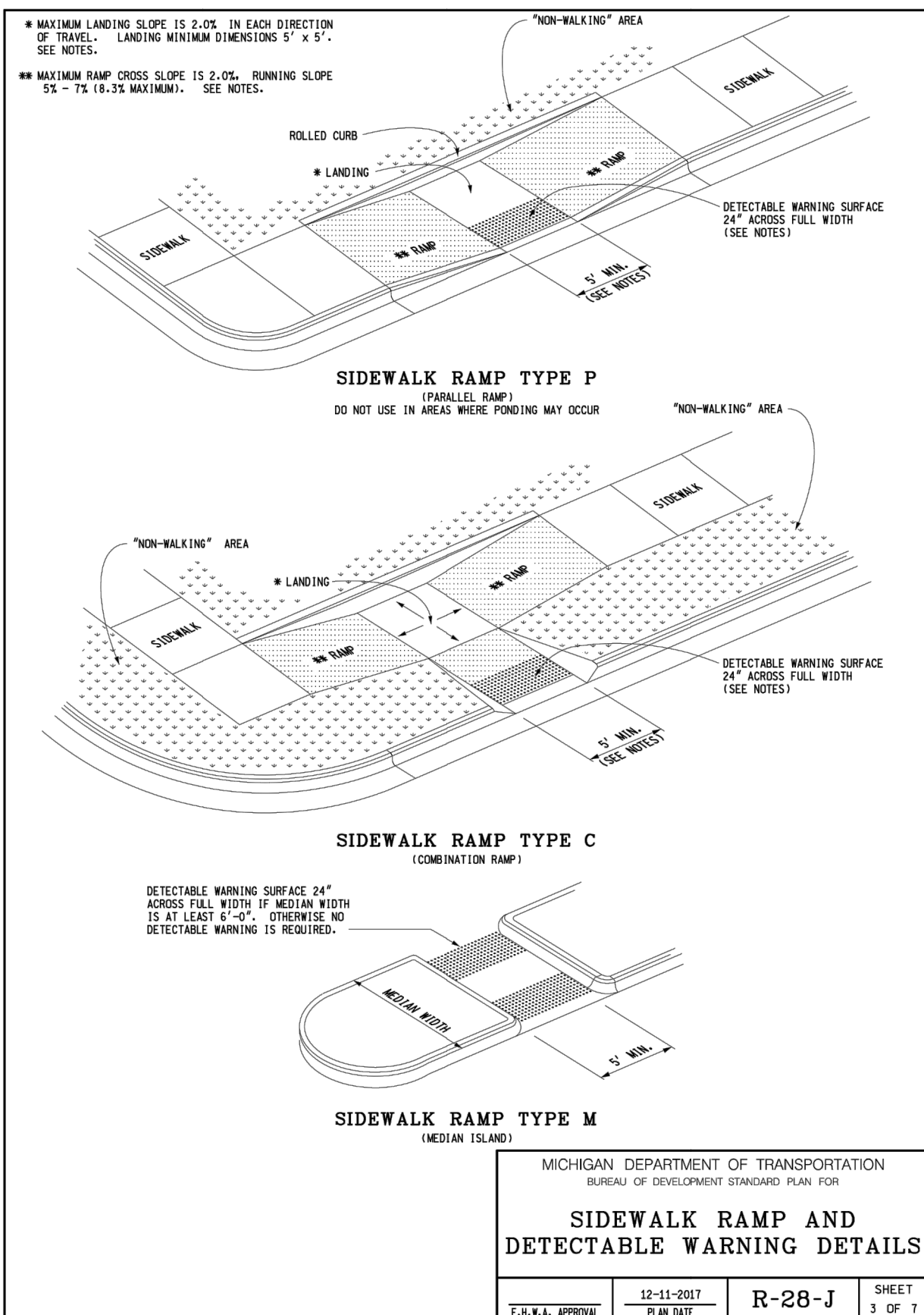
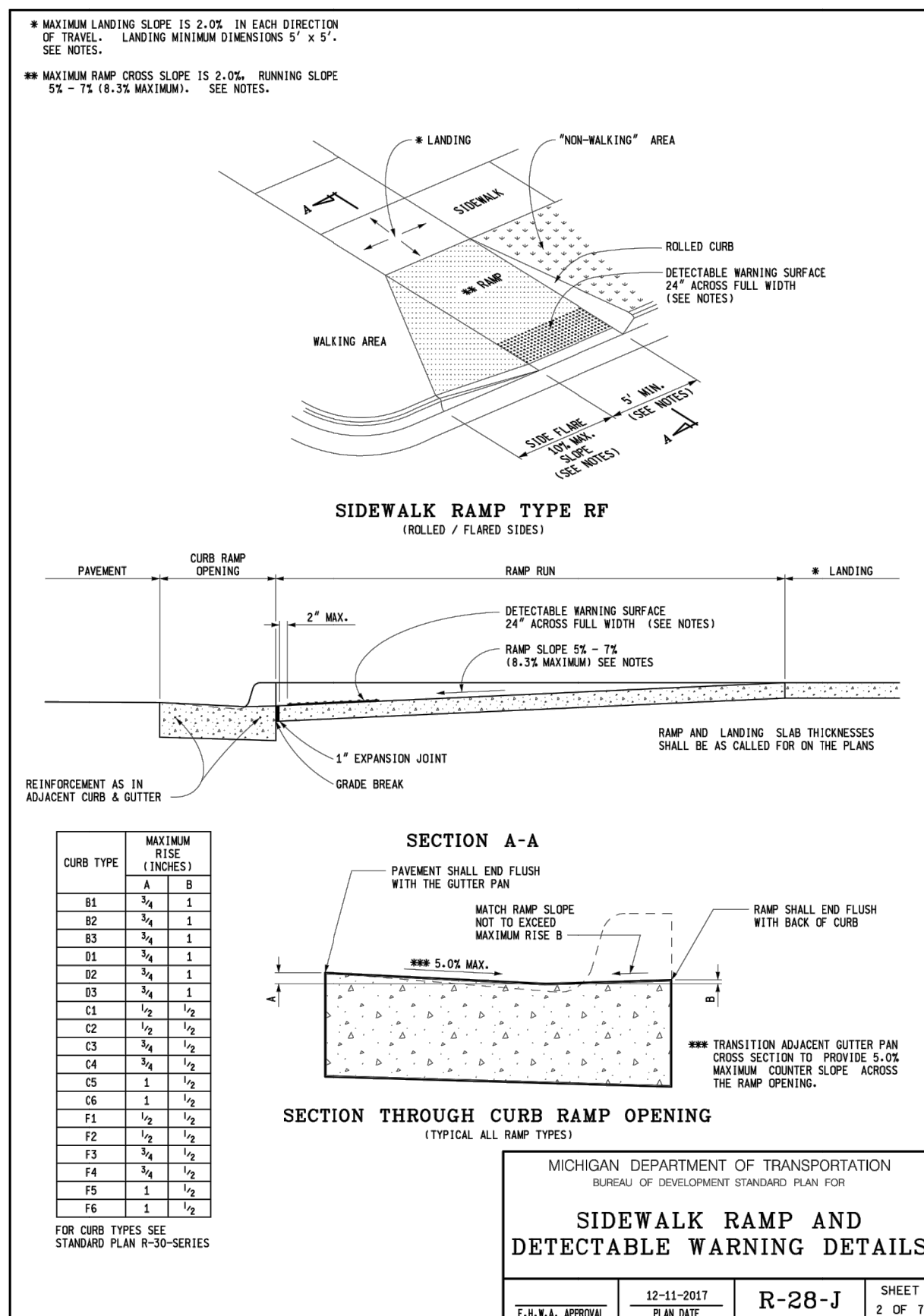
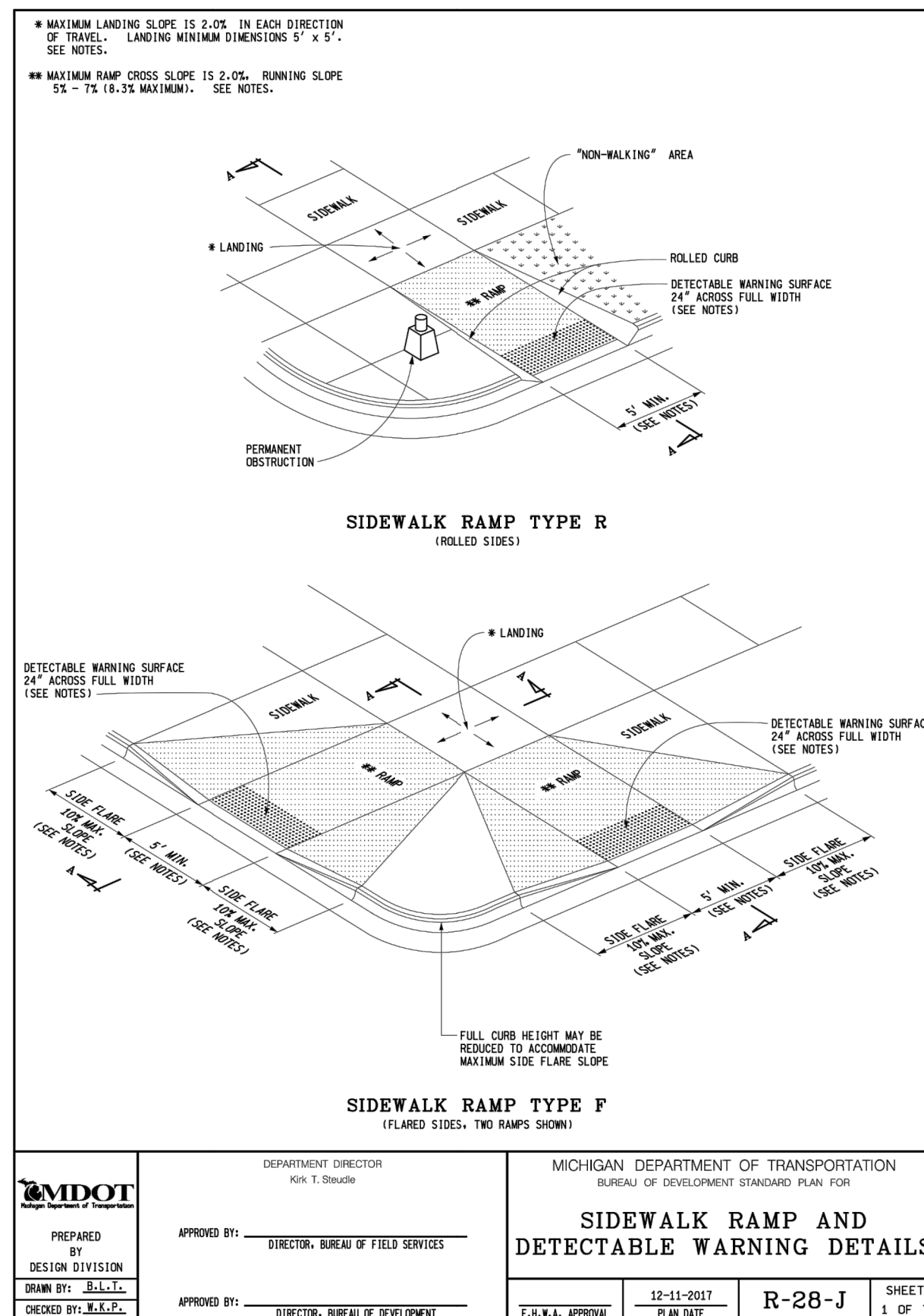
MCA JOB #:	1039-18-8756
DATE:	06.19.2023
SCALE:	AS SHOWN PER DETAIL
DRAWN BY:	Metro Consulting Associates
COUNTY:	WAYNE
SHEET:	P1

CONSTRUCTION SITE SAFETY IS THE RESPONSIBILITY OF THE CONTRACTOR. NEITHER THE OWNER NOR THE ENGINEER SHALL BE EXPECTED TO ASSUME ANY RESPONSIBILITY FOR SAFETY OF THE WORK, OF PERSONS ENGAGED IN THE WORK, OF ANY NEARBY STRUCTURES, OR OF ANY OTHER PERSONS.

THE LOCATIONS OF EXISTING UNDERGROUND UTILITIES ARE SHOWN IN AN APPROXIMATE WAY ONLY AND HAVE NOT BEEN INDEPENDENTLY VERIFIED. THE CONTRACTOR SHALL DETERMINE THE EXACT LOCATION OF ALL EXISTING UTILITIES BEFORE COMMENCING WORK, AND AGREES TO BE FULLY RESPONSIBLE FOR ANY AND ALL DAMAGES WHICH MIGHT BE OCCASIONED BY THE CONTRACTOR'S FAILURE TO EXACTLY LOCATE AND PRESERVE ANY AND ALL UNDERGROUND UTILITIES.



COPYRIGHT © 2018 METRO CONSULTING ASSOCIATES; ALL RIGHTS RESERVED.



AS-LET PLAN REVISIONS		DATE		CS:			
NO.	DATE	AUTH.	DESCRIPTION	NO.	DATE	AUTH.	DESCRIPTION

DETAILS FOR REFERENCE ONLY - CONTRACTOR RESPONSIBLE TO ENSURE SITE ELEMENTS MEET ALL CURRENT ADA REQUIREMENTS

REV.	DATE	ISSUED FOR:

CITY OF HIGHLAND PARK
STANDARD PAVEMENT DETAILS AND NOTES
 PAVEMENT-2



MCA JOB #: 1039-18-8756
 DATE: 06.19.2023
 SCALE: AS SHOWN PER DETAIL
 DRAWN BY: Metro Consulting Associates
 COUNTY: WAYNE
 SHEET: P2

CONSTRUCTION SITE SAFETY IS THE RESPONSIBILITY OF THE CONTRACTOR. NEITHER THE OWNER NOR THE ENGINEER SHALL BE EXPECTED TO ASSUME ANY RESPONSIBILITY FOR SAFETY OF THE WORK, OF PERSONS ENGAGED IN THE WORK, OF ANY NEARBY STRUCTURES, OR OF ANY OTHER PERSONS.

THE LOCATIONS OF EXISTING UNDERGROUND UTILITIES ARE SHOWN IN AN APPROXIMATE WAY ONLY AND HAVE NOT BEEN INDEPENDENTLY VERIFIED. THE CONTRACTOR SHALL DETERMINE THE EXACT LOCATION OF ALL EXISTING UTILITIES BEFORE COMMENCING WORK, AND AGREES TO BE FULLY RESPONSIBLE FOR ANY AND ALL DAMAGES WHICH MIGHT BE OCCASIONED BY THE CONTRACTOR'S FAILURE TO EXACTLY LOCATE AND PRESERVE ANY AND ALL UNDERGROUND UTILITIES.

811 Know what's below. Call before you dig.

© 2018 METRO CONSULTING ASSOCIATES; ALL RIGHTS RESERVED.